



**REGIONAL SPECIALISED METEOROLOGICAL CENTRE-TROPICAL CYCLONES, NEW DELHI
SPECIAL TROPICAL WEATHER OUTLOOK**

DEMS-RSMC TROPICAL CYCLONES NEW DELHI DATED 14.07.2025

SPECIAL TROPICAL WEATHER OUTLOOK FOR NORTH INDIAN OCEAN (THE BAY OF BENGAL AND THE ARABIAN SEA) VALID FOR NEXT 168 HOURS ISSUED AT 0900 UTC OF 14.07.2025 BASED ON 0600 UTC OF 14.07.2025.

SUB: (A) DEPRESSION OVER SOUTHEAST GANGETIC WEST BENGAL AND ADJOINING BANGLADESH

(B) WELL MARKED LOW PRESSURE AREA OVER NORTHEAST RAJASTHAN AND ADJOINING NORTHWEST MADHYA PRADESH

(A) DEPRESSION OVER SOUTHEAST GANGETIC WEST BENGAL AND ADJOINING BANGLADESH

THE WELL MARKED LOW PRESSURE AREA OVER SOUTHEAST GANGETIC WEST BENGAL AND ADJOINING BANGLADESH CONCENTRATED INTO A DEPRESSION OVER THE SAME REGION AND LAY CENTRED AT 0600 UTC OF TODAY, THE 14TH JULY 2025, NEAR LAT. 23.0°N AND LONG. 88.8°E, ABOUT 70 KM NORTHEAST OF KOLKATA (42807) AND 100 KM EASTSOUTHEAST OF BURDWAN (42709).

IT IS LIKELY TO MOVE WEST-NORTHWESTWARDS ACROSS GANGETIC WEST BENGAL DURING NEXT 24 HOURS.

AS PER INSAT 3DR IMAGERY, AT 0600 UTC OF 14TH JULY 2025 SCATTERED TO BROKEN LOW/MEDIUM CLOUDS WITH EMBEDDED INTENSE TO VERY INTENSE CONVECTION OVER ODISHA, JHARKHAND, GANGETIC WEST BENGAL SOUTH BANGLADESH AND NORTH BAY OF BENGAL (MINIMUM CLOUD TOP TEMPERATURE IS 70-90 °C).

(B) WELL MARKED LOW PRESSURE AREA OVER NORTHEAST RAJASTHAN AND ADJOINING NORTHWEST MADHYA PRADESH

THE WELL MARKED LOW PRESSURE AREA OVER NORTHEAST RAJASTHAN & ADJOINING NORTHWEST MADHYA PRADESH PERSISTED OVER THE SAME REGION AT 0600 UTC OF TODAY, THE 14TH JULY, 2025.

IT IS LIKELY TO CONTINUE TO MOVE FURTHER SLOWLY WEST-NORTHWESTWARDS ACROSS RAJASTHAN DURING NEXT 2 DAYS.

AS PER INSAT 3DR IMAGERY, AT 0600 UTC OF 14TH JULY 2025 SCATTERED TO BROKEN LOW/MEDIUM CLOUDS WITH EMBEDDED INTENSE TO VERY INTENSE CONVECTION OVER RAJASTHAN WEST MADHYA PRADESH (MINIMUM CLOUD TOP TEMPERATURE IS 70-90 °C).

WARNINGS:

WIND WARNING:

- SQUALLY WIND SPEED REACHING 40-50 KMPH GUSTING TO 60 KMPH IS PREVAILING OVER NORTH BAY OF BENGAL, ALONG & OFF ODISHA, WEST BENGAL AND BANGLADESH COASTS FOR NEXT 24 HOURS. SQUALLY WIND SPEED REACHING 30-40 KMPH GUSTING TO 50 KMPH IS LIKELY OVER WEST BENGAL, JHARKHAND, AND NORTH ODISHA DURING NEXT 24 HOURS.
- SQUALLY WIND SPEED REACHING 30-40 KMPH GUSTING TO 50 KMPH IS LIKELY OVER NORTHEAST RAJASTHAN AND ADJOINING NORTHWEST MADHYA PRADESH FOR NEXT 24 HOURS AND OVER SOUTH RAJASTHAN & NEIGHBOURHOOD FOR SUBSEQUENT 24 HOURS.

SEA CONDITION:

- SEA CONDITION IS VERY LIKELY TO BE **ROUGH TO VERY ROUGH** OVER NORTH BAY OF BENGAL AND ALONG & OFF ODISHA, WEST BENGAL AND BANGLADESH COASTS DURING NEXT 24 HOURS.

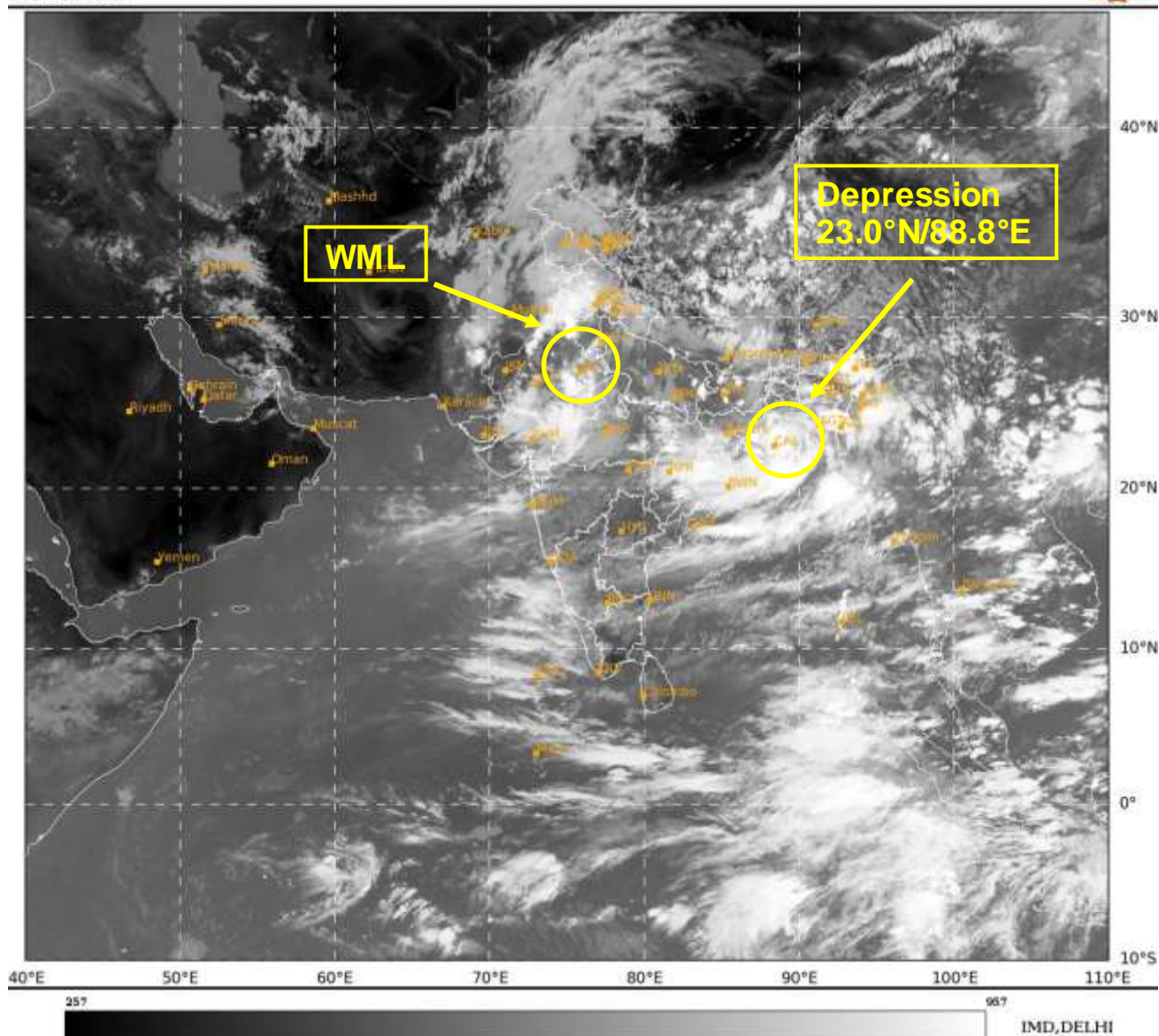
FISHERMEN WARNING:

- FISHERMEN ARE ADVISED NOT TO VENTURE INTO NORTH BAY OF BENGAL, ALONG AND OFF ODISHA, WEST BENGAL, AND BANGLADESH COASTS FOR NEXT 24 HOURS.

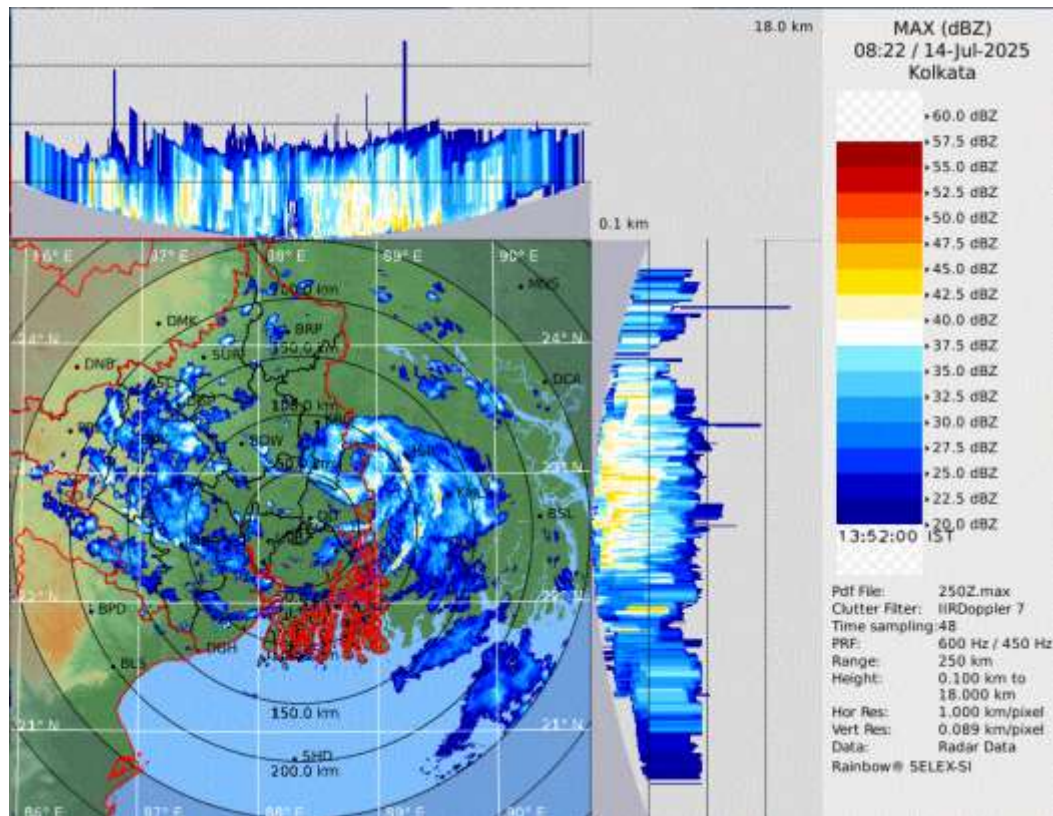
(DR. AKHIL SRIVASTAVA)
SCIENTIST-D
RSMC NEW DELHI

SAT : INSAT-3DR IMG
 IMG_TIR1 10.8 um
 LIC Mercator

14-07-2025/(0715 to 0742) GMT
 14-07-2025/(1245 to 1312) IST



Cloud distribution: (a) Isolated: <25%, Scattered:25-50%, Broken: 51-75%, Solid:>75%, Convection Intensity: (a) Weak: Cloud Top Temperature (CTT) >-25°C, (b) Moderate: CTT: - 25°C to -40°C, (c) Intense: CTT: - 41°C to -70°C and (d) Very Intense: : Less than -70°C
 PROBABILITY OF CYCLOGENESIS (FORMATION OF DEPRESSION):NIL: 0%, LOW: 1-33% , MODERATE: 34-66% AND HIGH: 67-100%
 This is a guidance Bulletin for WMO/ESCAP Panel Member countries. Visit respective National websites for Country specific Bulletins



Latest Radar Image of DWR Kolkata

Fishermen Warning Graphics

